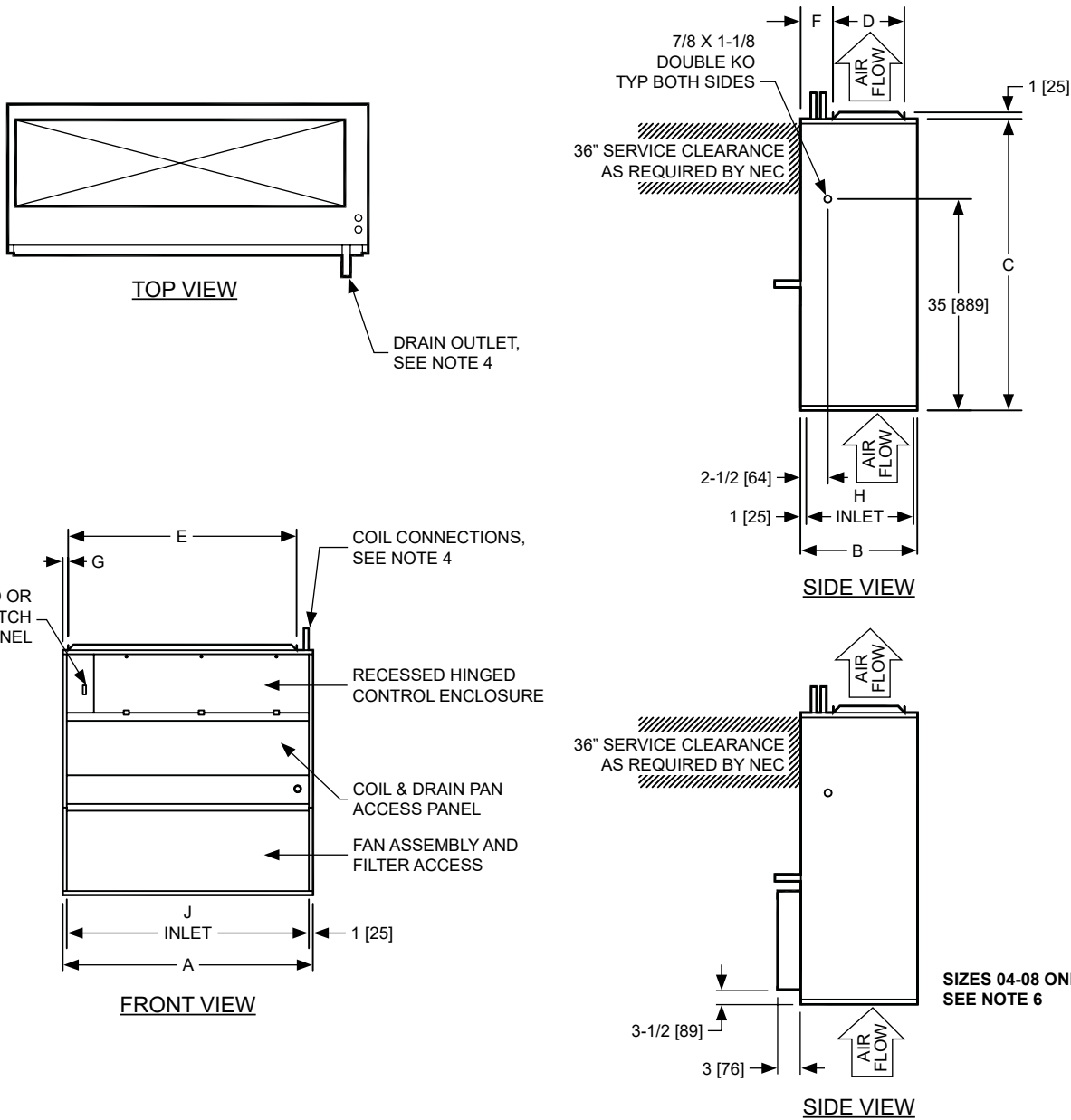


RAVC Series A

RAVC Series A with Bottom Return

SUBMITTAL SHEET



DIMENSIONS

UNIT SIZE	A	B	C	D	E	F	G	H	J
04-06	22" [559]	15" [381]	48" [1219]	7-1/2" [190]	17" [432]	5-3/4" [146]	1-1/4" [32]	13" [330]	20" [508]
08	22" [559]	15" [381]	48" [1219]	10" [254]	17" [432]	3-1/4" [83]	1-1/4" [32]	13" [330]	20" [508]
10-12	29" [737]	18" [457]	48" [1219]	12-3/4" [324]	24" [610]	3-3/4" [95]	1-1/4" [32]	16" [406]	27" [668]
16-20	46" [1168]	18" [457]	48" [1219]	12-3/4" [324]	39" [991]	3-3/4" [95]	3" [76]	16" [406]	44" [1118]

NOTE:

1. All dimensions are in inches [millimeters]. All dimensions are $\pm 1/4"$ [6mm]. Metric values are soft conversion.
2. All drawings subject to change without prior notice.
3. Right hand unit shown, left hand unit opposite.
4. See coil connection drawings for coil connection sizes and locations.
5. Front return units are not designed for use with a ducted return.
6. Dimensions shown apply to filter access panel for unit sizes 04-08 only.